

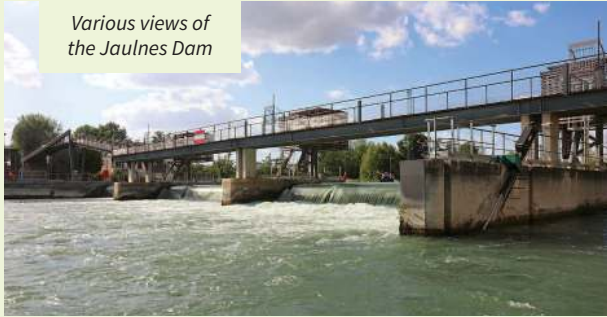
The Jaulnes Dam

In 2003, Jaulnes dam replaced a dam that had existed at this location since 1886. This change is part of a new approach promoting facilities that respect the natural environment and landscapes.

One of the benefits of this sustainable approach is the view of the housing containing the motors, which resemble fishing huts built on stilts, a staircase passageway and fish spawning area, a harmonious alliance between wood and stone.

The efforts to preserve the natural environment have also included planting, lighting and reducing the visual impact of the facilities. The Jaulnes Dam received the Seine-et-Marne special award for modern architecture.

Various views of the Jaulnes Dam



Edition Provins Tourisme - Codérando 77 - Conception et réalisation : CreaClic - 09/2020 - 250 ex. - The information provided might be subject to changes.



Access: Bray-sur-Seine, 17 km east of Montereau-Fault-Yonne via D411 and D412.

Practical information: all shops.

The Hiker's Code of Conduct

- Do not leave the marked paths.
- If there are any doubts regarding which path to take, markings take precedence over the description.
- Respect nature and private property.
- Don't litter.
- Avoid routes during hunting season (check with the town halls or the Seine-et-Marne hunting federation).
- Close gates and fences after you.
- Whenever possible, remove any obstacles from the path.



PROVINS TOURISME
entre Bassée, Montois et Morin

4 chemin de Villecran, 77160 PROVINS
Tel.: 33 (0)1 64 60 26 26 - www.provins.net



Hiking

in Provinois, Bassée-Montois and Morin

BRAY-SUR-SEINE Detour to Jaulnes dam

At the heart of Bassée valley, walk in the steps of Caesar. Until 1498, the Roman road, Via Agrippa, connecting Lyon to Boulogne-sur-Mer, crossed the Seine at Jaulnes, then Bray bridge was built.



PROVINS TOURISME
entre Bassée, Montois et Morin

Detour to Jaulnes dam

- 1 From the church square, walk towards the Seine via Rue Victor Hugo. Take Rue Grande to the left, Rue Émile Zola on the right, Rue des Ermites on the left, Rue du Minage on the right (Joan of Arc house from the 16th century) Quai de l'Île on the right.
- 2 Enter the park on the left and exit via the country lane on banks of the Seine. It continues along the river, sometimes in undergrowth, then leads to the right.
- 3 Follow the street on the left to enter Jaulnes and pass the church. Just after, at the crossroads, take the street on the left. It leads to the Seine. Go along the "needle wall" (the automated hydraulic dam, installed in 2003, replaced the former dam, dating from 1886; which regulated the river level of the Seine in the event of flooding by removing the right number of needles), then cross the footbridge across the lock- dam. Turn right and walk 200 m to the crossroads.
- 4 Take the farm road on the left for 500 m. After the small woods, continue to the left between woods and fields. Take the road to the left and enter Mouy-sur-Seine, passing the town hall-school (a plaque on the pillar to the right of the courtyard indicates the flood level in 1910). Pass Sainte-Geneviève church (moved during the 18th century from Vieux-Mouy due to flooding).
- 5 Walk past the road opposite leading to the old bridge and continue right to the roundabout. Take D412 to the left (be careful!) it crosses the Seine. Turn left on Rue Grande, continue for 100 m, cross Halle au Blé on the right (renovated in late 2007) and take Rue Taveau back to the church.



The Banks of
Bray-sur-Seine



The trail markings on this route are installed and maintained by 250 footpath wardens from the Seine-et-Marne departmental hiking committee. (Codérando 77). It is part of a network of 4,500 km of walking and hiking trails in the department. If you notice any irregularities during your hikes (errors or lack of markings, poor maintenance, illegal waste disposal), please inform Codérando 77 via the website <http://sentinelles.sportsdenature.fr/> by selecting the "hiking" activity.